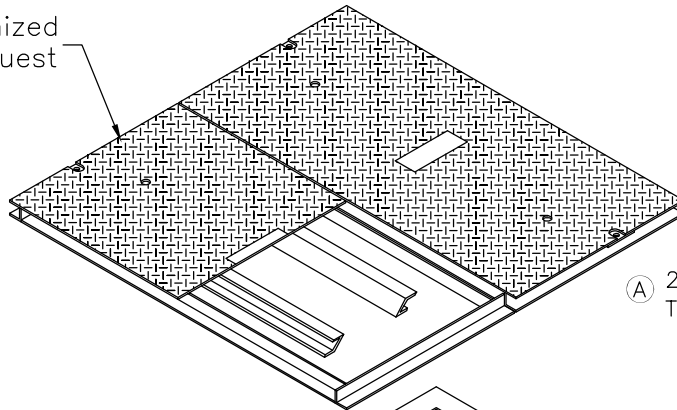


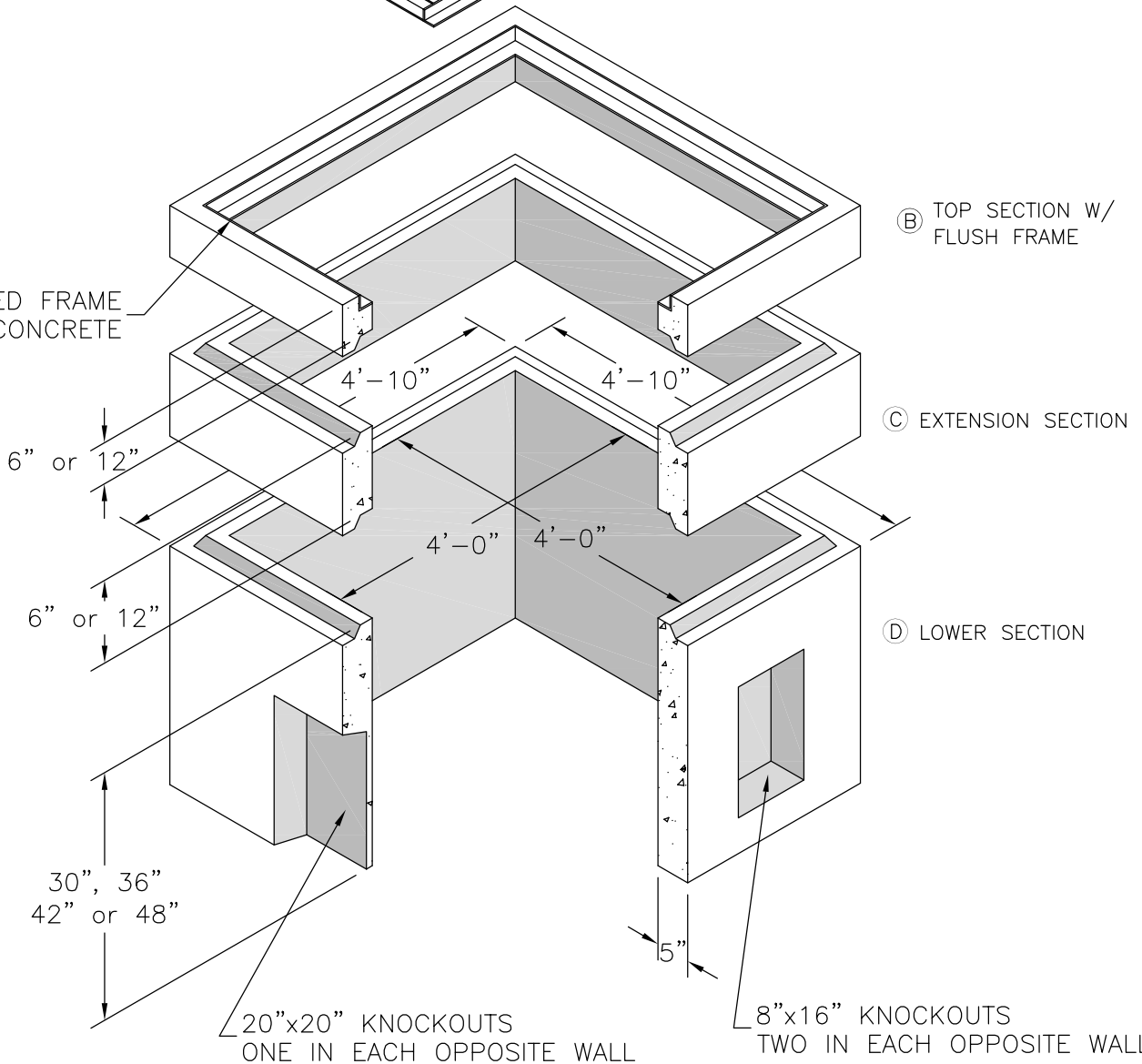
\*ALUMINUM & STEEL SPRING ASSIST  
COVERS AVAILABLE UPON REQUEST

Painted or Galvanized  
Available Upon Request



(A) 2pc. STEEL BOLTDOWN  
TRAFFIC / PARKWAY COVER

STEEL GALVANIZED FRAME  
CAST IN CONCRETE



(B) TOP SECTION W/  
FLUSH FRAME

(C) EXTENSION SECTION

(D) LOWER SECTION

\*\*Minimun Excavation: 5'-10"x5'-10"xDepth Req'd

**4'-0" X 4'-0" OPEN BOTTOM  
UTILITY VAULT W/ STEEL  
TRAFFIC COVER or STEEL  
PARKWAY COVER**

Notes:

1. Traffic Covers Are Designed For AASHTO H-20 Wheel Loading, But Are Not Intended For Direct Traffic Installations.
2. Parkway Covers Are Designed For A Live Load of 300 p.s.f.