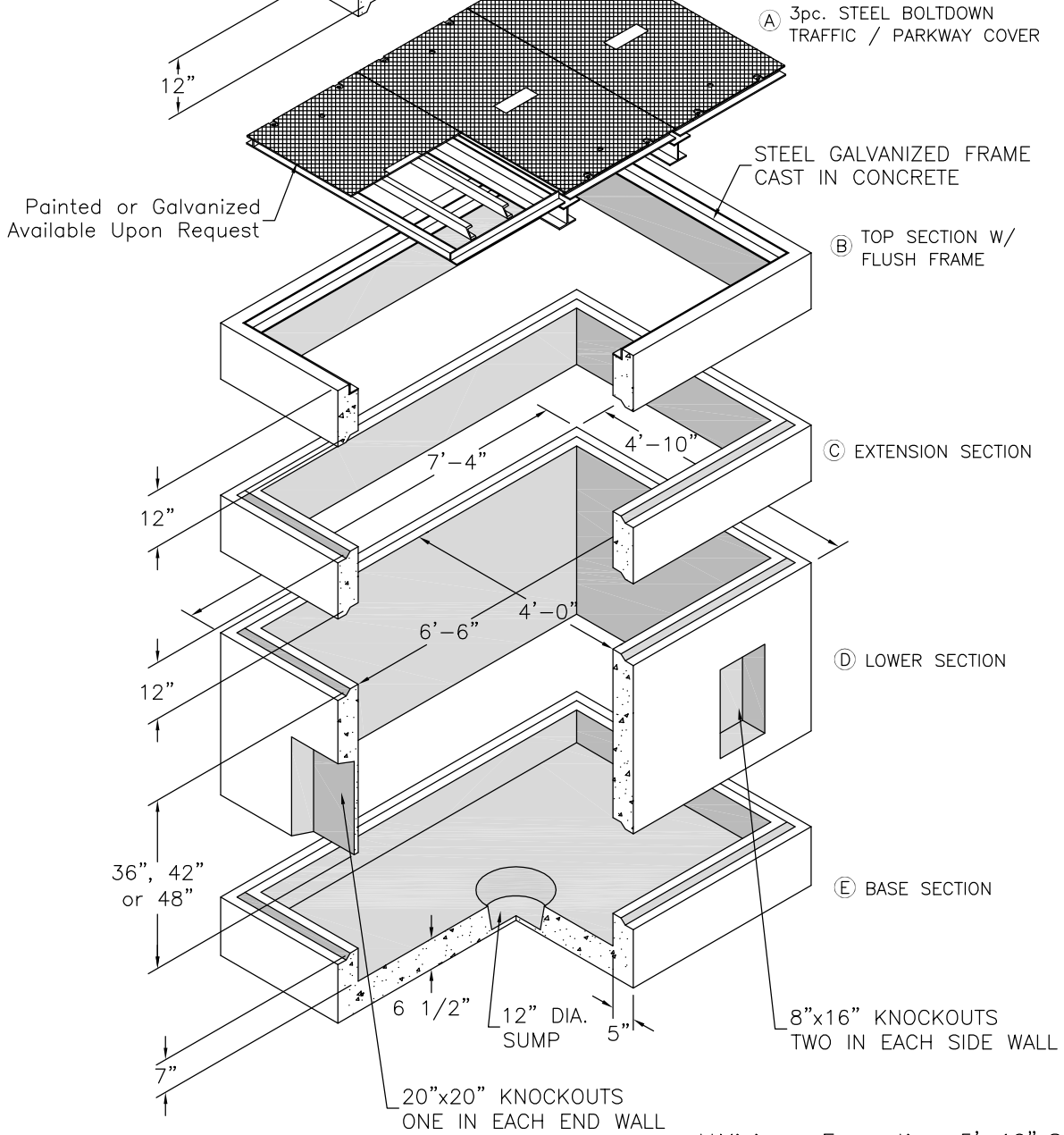


"U.S.F" 4'-0"x6'-0" PARKWAY TPD ALUMINUM, SPRING ASSIST COVER W/ STANDARD HARDWARE & OVERSIZED RECESSED PADLOCK HASP (NOT SHOWN FOR CLARITY)



\*\*Minimun Excavation: 5'-10"x8'-4"xDepth Req'd

**4'-0" X 6'-6" CLOSED BOTTOM UTILITY VAULT W/ STEEL TRAFFIC COVER or STEEL PARKWAY COVER**

Notes:

1. Traffic Covers Are Designed For AASHTO H-20 Wheel Loading, But Are Not Intended For Direct Traffic Installations.
2. Parkway Covers Are Designed For A Live Load of 300 p.s.f.