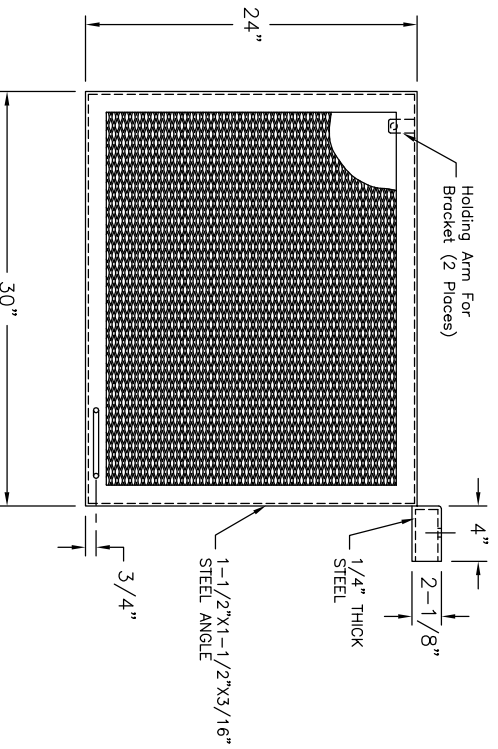
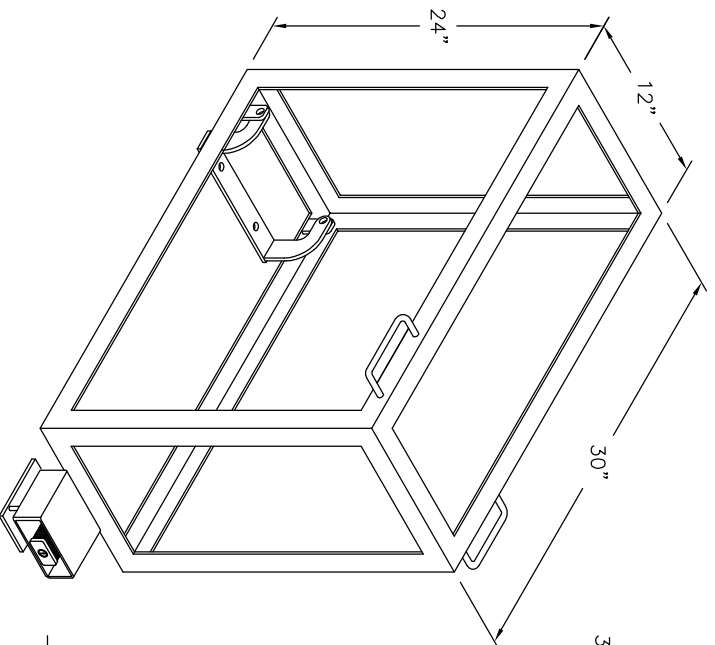
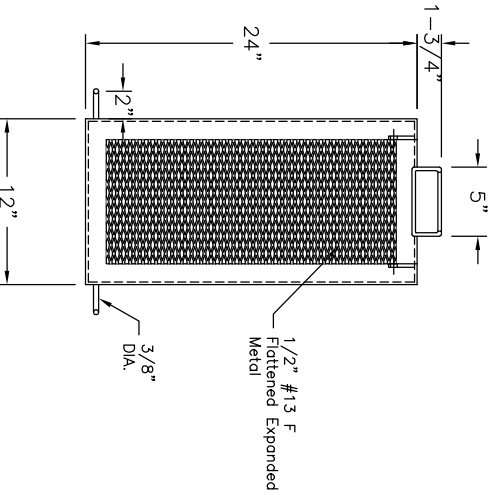


PLAN VIEW

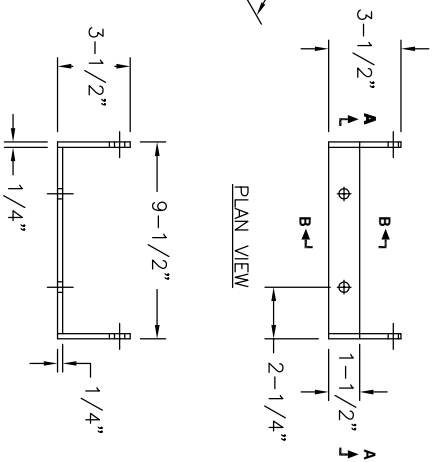


SECTION A-A

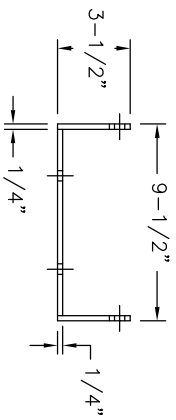


SECTION B-B

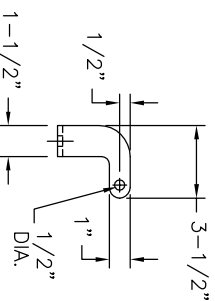
*Pictured Upside-down
For Manufacturing Purposes



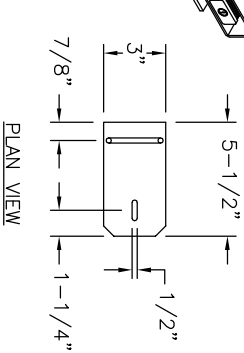
DETAILED BRACKET



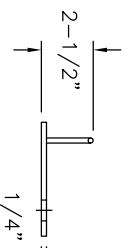
SECTION A-A



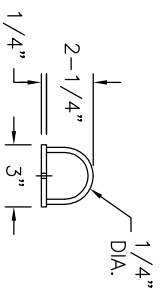
SECTION B-B



DETAILED LOCK HASP BRACKET



SECTION A-A



SECTION B-B

Notes:

1. Enclosure To Be Placed On A Minimum Of 28"x46"x6" Concrete Pad.
2. Different sizes available Upon Request.
3. Colors Available: Bengal Green & Taupe.

Product:		12" X 30" X 24"	
BACKFLOW ENCLOSURE			
Drawn By: J.C	Checked By:	Scale: N/A	
Date: 4/11/08	Date:	Dwg. No: 1091A	
Part Number:	BFE-123024-1/2" #1		
J&K Concrete Products Inc. 4651 124th Ave. S.E. (951) 243-5855 Fax: (951) 240-2207	SHL 1 of 1		